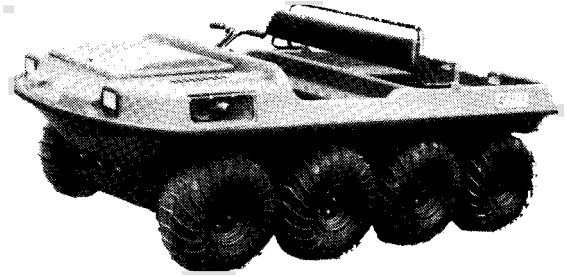


**ARGO**  
RBI 2702



# ARGO

## RESPONSE PARTS MANUAL

**Model No. V896-65**  
**From Serial #RBI 2702**

## Foreword

**ODG** has prepared this parts manual for the **RESPONSE** model to assist both qualified mechanics and vehicle owners in ordering correct, quality replacement **ARGO** parts.

Proper and regular service, and replacing old, worn or broken parts with the correct **ARGO** replacement parts, are both essential to prolonging the life of the **ARGO**. Please refer to this parts manual before ordering any replacement part.

All information contained in this **RESPONSE** Parts Manual is based on the latest product specification available at time of printing. If your **RESPONSE** differs from the specifications contained in this manual, **contact Ontario Drive & Gear Limited for information.**

**ODG** reserves the right to alter specifications on the **RESPONSE** model at any time, without obligation or prior notification.

Reproduction of the **RESPONSE Parts Manual No. 896-65-1**, in whole or in part, is prohibited without prior written permission from **Ontario Drive & Gear Limited.**

## Model Identification

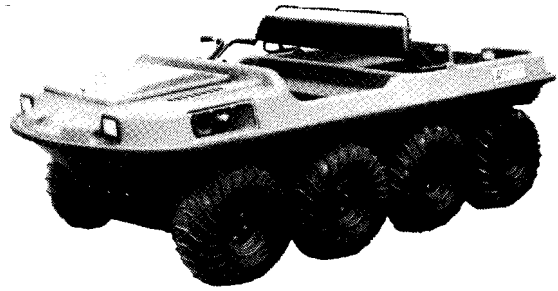
**RESPONSE - Model No. V896-65-1**

## Explanation of Parts Manual Format

- Reference Number between Assembly Diagram and Component Parts List
- Part No.** - Argo replacement part number for identification and re-ordering
- Description** - Part Description for identification and re-ordering
  - Indicates the quantity of a part used in an Assembly

# ARGO 8x8

RESPONSE

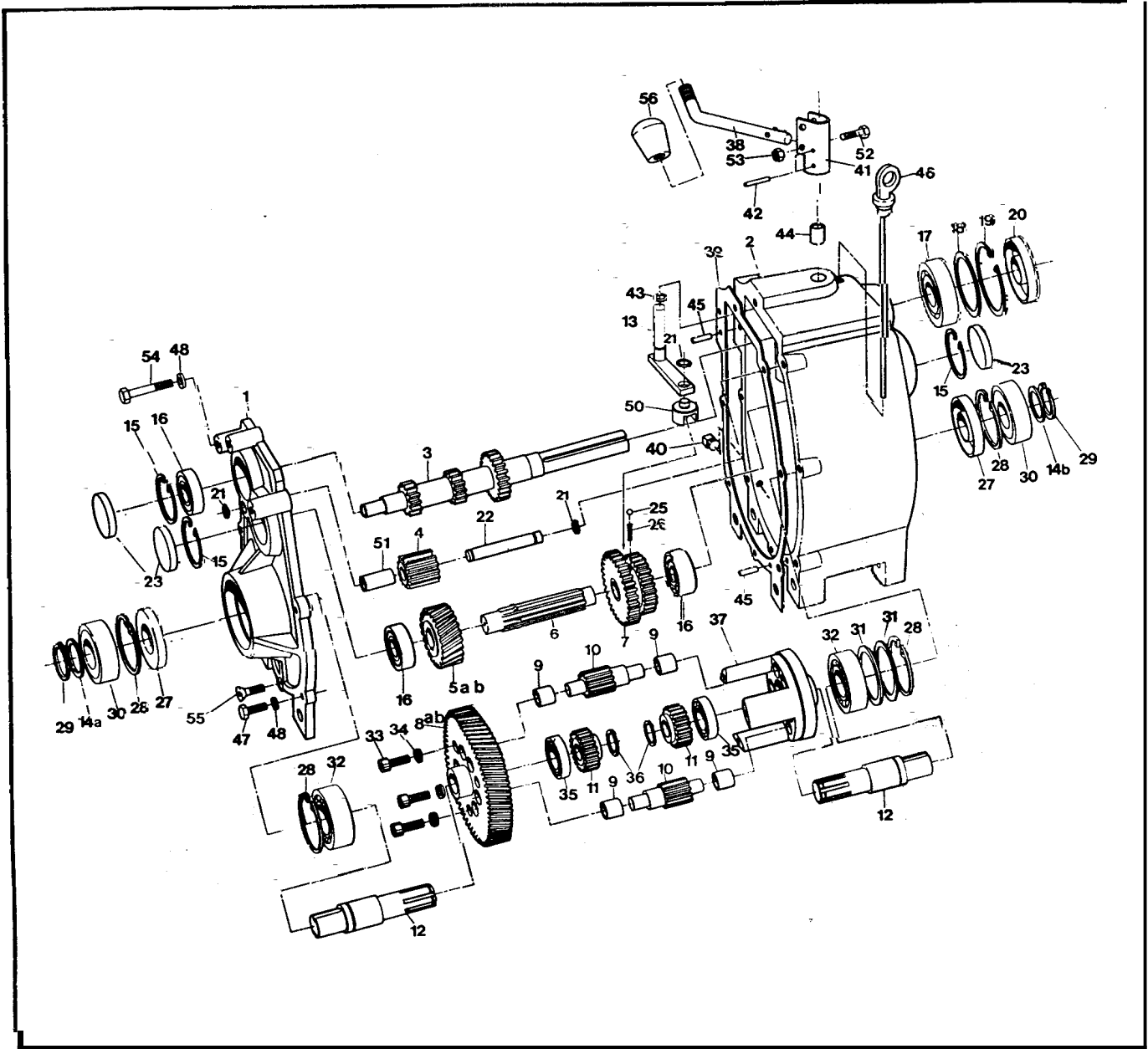


## Using the Parts Manual

1. Find the major vehicle assembly in the Table of Contents on this page, and turn to that section.
2. Locate the part in the illustration that you wish to order.
3. Refer to the parts list in that section.
4. Find the correct part number (Part No.), part description (Description) and correct quantity (Qty).
5. Use *only* this information to order **ARGO** replacement parts. **DO NOT** attempt to order a replacement part by Ref number or Page number.

## Table of Contents

Foreword.....	i
Model Identification.....	i
Using the Parts Manual.....	ii
1.0 Transmission.....	1
2.0 Intake and Exhaust System.....	3
3.0 Clutch System.....	3
4.0 Power Pack Assembly.....	5
5.0 Brake System.....	7
6.0 Vehicle Body & Firewall.....	9
7.0 Frame & Drive System.....	11
8.0 Fuel System & Seat Assembly....	13
9.0 Electrical System.....	15



Ref	Part No	Description	Qty	Ref	Part No	Description	Qty
	510-17MU	<b>Transmission Asm - MU,</b> does not include Refs 38, 52, 53 & 56 <b>uses Refs 5a &amp; 8a</b>		26	34-31	Spring, Compression - 7/32 x .50	1
	610-17GU	<b>Transmission Asm - GU,</b> does not include Refs 38, 52, 53, & 56 <b>uses Refs 5b &amp; 8b</b>		27	102-03	Seal, Oil WBS 30x72x10	2
1	34-68	Cover, Transmission	1	28	106-0:	Retaining Ring #5000-281PA	4
2	34-99	Housing, Transmission	1	29	107-02	Retaining Ring N1400-118	2
3	34-21	Shaft, Input - 13/21T	1	30	101-05	Bearing, Ball 6306-2NSE C	2
4	34-16A	Gear Idler - 13T (incl. Ref 51)	1	31	114-01	Washer, Shim .020x2.25x2.8 1	2
5a	34-95	Gear, Helical - 24T (MU)	1	32	101-03	Bearing, Ball 6207-C 3	2
5E	34-97	Gear, Helical - 21T (GU)	1	33	103-04	SHCS, 5/16-18 x 1.00 PL	3
6	34-94	Shaft, Splined	1	34	108-02	Lockwasher, Hi-Collar 5/16, PL	3
7	34-91	Gear, Double - 26/33 T	1	35	101-15	Bearing, Ball 6005-C 3	2
8a	34-22	Gear Plate - 73T (M)	1	36	107-04	Retaining Ring N1400-98	2
8E	34-45	Gear Plate - 76T (G)	1	37	34-08	Cage	1
9	105-03	Bushing, Oilite -AA650	12	38	610-77	Shift Lever Rod	1
10	34-13	Gear, Planet -12 T	6	39	34-47	Gasket, Cover - 1/64"Thk	1
11	34-14	Gear, Sun - 21 T	2	4C	103-02	Plug, Magnetic 3/8-18 NPT	1
12	34-81	Shaft, Output	2	41	34-86	Holder, Shift Lever	1
13	34-65	Shifter Assem.	1	42	111-01	Pin, Spirol 5/32 x 1.00	2
14a	114-04	Washer, Shim .040 Thk	1	43	113-01	O-Ring 012-7147	1
14b	114-05	Washer, Shim .020 Thk	1	44	105-02	Bushing, Oilite - A4628	1
15	106-01	Retaining Ring #5000-187PA	3	45	104-03	Pin, Dowel 1/4" x 7/8" long	2
16	101-01	Bearing, Ball 62042-C 3	3	46	34-77	Dipstick, with breather	1
17	101-16	Bearing, Ball 6206-C3	1	47	103-06	HHCS 5/16-18x1.00 GR5 Zinc	4
18	114-02	Washer, Shim 2.062	is eq.	48	108-05	Lockwasher 5/16 Zinc	7
19	106-05	Retaining Ring N1300-244	1	50	34-63	Shift Yoke	1
20	102-05	Seal, Oil WBS 30x62x10	1	51	105-05	Bushing, Oilite - AA650-3 (in Ref.4)	1
21	107-05	Retaining Ring N1400-50	3	52	103-97	HHCS 1/4-20x1.25 GR5 Zc	1
22	34-11	Pin, Dowel 1/2 x 3.50	1	53	117-27	Locknut, Nylon 1/4-20 Zinc	1
23	31-07	Plug plate	3	54		<b>See Section 4.0</b>	
25	109-05	Ball, Steel 6mm 62-67 Rc	1	55	103-95	FHSC 5/16-18x1.0 GR8 Zin	1
				56	126-38	Knob, Shift	1























# Response Parts Manual 8.0 Fuel System and Seat Assembly

Ref	Part No	Description	Qty	Ref	Part No.	Description	Qty
1	803-50	Handrail Assembly	1	21	608-42	Fuel Hose, 110"	1
2	108-03	Lockwasher, Split Ring 1/4"	4	22	125-64	Fuel Filter, G 81-4	1
3	112-41	PHMS, PHIL 1/4-20x1.250Zc.	6	23	100-12	Clamp, Gear 2.25" HF36	2
4	608-39	Back Pad Assembly	1	24	125-94	Hose, Filler	1
5	608-43	Seat. Bench	1	25	126-47	Fuel Neck Assembly	1
6	608-3C	Angle, Left	1	26	126-46	Cap, Fuel	1
7	608-31	Angle, Right	1	27	127-21	Hose, Vent 86"	1
9	112-04	HHCS 1/4-20x 3/4 GR2 ZN	6	28	126-50	Male Connector, 1/4"	1
10	108-03	Lockwasher 1/4-20x 1/4 Split Ring Zf	6	29	126-94	Clamp, Nylon Wire, 1/4"ID	5
13	804-17	Frame Assembly, Seat	1	30	112-04	HHCS 1/4-20x3/4 Gr 2 Zinc	4
16	120-04	Washer, .195IDx.500Dx.08Z	2	31	117-10	Locknut, Nylon #10-24 Zinc	12
17	608-32	Tool Box	1	32	126-62	Clamp, Gear 1/4 2-Ear #050Z	1
18	608-28	Pickup Assembly, Fuel (See Ref. 19)	1	33	126-93	Clamp, Nylon Wire, 1/2" ID	4
19	608-24	Tank, Fuel 32 litre (incl. Ref. 18)	1	34	108-08	Washer, .28x.62x.04 Zinc	4
20	100-70	Clamp, Gear 1/2" HF4	4	35	120-09	Rivet, 3/16 x 1	3
				36	120-13	Rivet, 3/16x5/8	5
				37	702-06	Foam Cushion	4
				38	117-54	Locking PAL Nut, 1/2-20Zc	1
				39	112-07	RHMS, 10-24x 1.25 Zinc	12
				40	108-42	Washer, .062x7/32x1.00 Zc	12
				41	103-48	T/S PAN HD PHIL #10x5/8 A Zc	1





